



TROCAL[®]
That's my window.

TROCAL InnoNova_70.A5 –
The distinctive profile.

Sometimes it just has to be more.

TROCAL InnoNova_70.A5 combines many innovative details.

» Fulfil your wish for individuality and high quality.

InnoNova_70.A5 from TROCAL is not a window like any other. It offers you creative potential for your personal signature. Its narrow visible sight line gives rise to lean profiles, but with large glass surfaces for more light and more zest for life in your rooms. This appealing design and its outstanding thermal insulation values are achieved only with a profile depth of 70 mm.



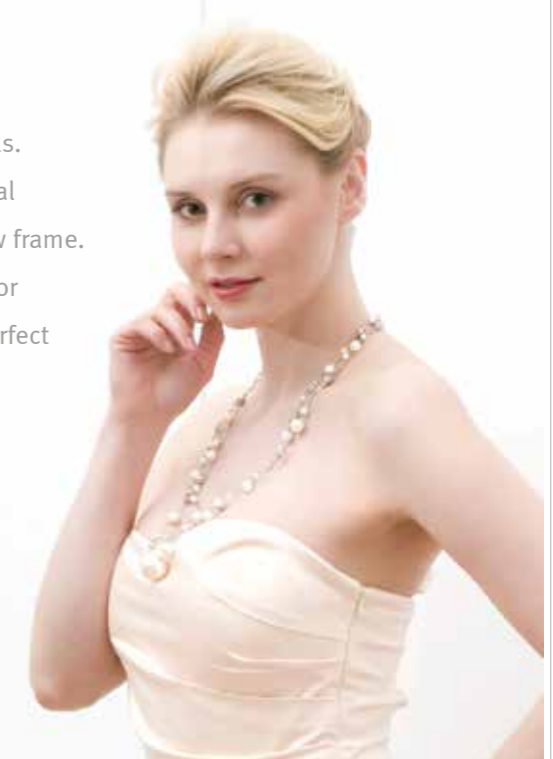
- Visual appeal.
- Virtually invisible seals.
- Wide range of colours.
- Elegant floating mullions.

The lean double seal system.



» The system.

TROCAL InnoNova_70.A5 is characterised by two sealing levels. Both an internal and external permanently elastic weather seal provides the perfect protection between the sash and window frame. The ease of cleaning in this system's window rebate speaks for itself. The large number of connecting profiles ensures the perfect installation.



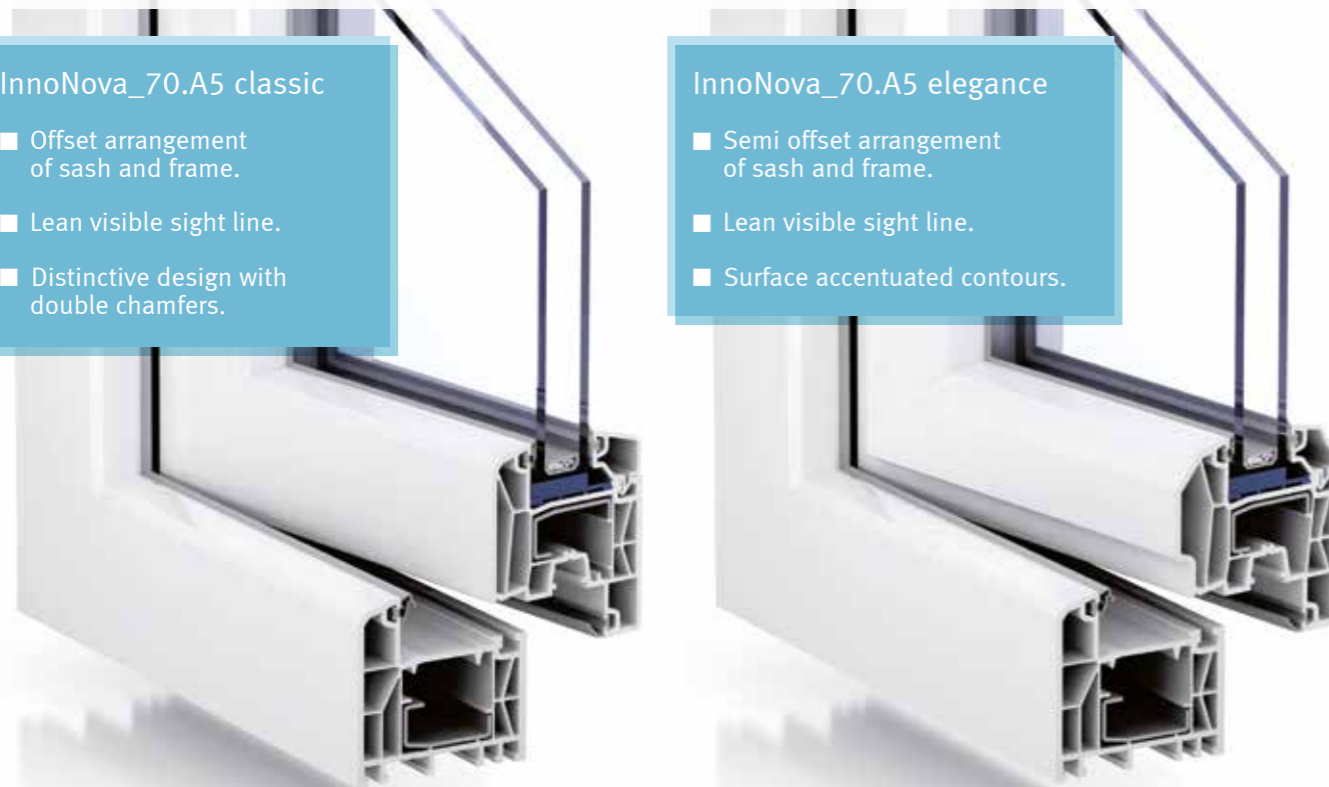
» TROCAL InnoNova_70.A5

InnoNova_70.A5 classic

- Offset arrangement of sash and frame.
- Lean visible sight line.
- Distinctive design with double chamfers.

InnoNova_70.A5 elegance

- Semi offset arrangement of sash and frame.
- Lean visible sight line.
- Surface accentuated contours.



» Huge design potential.



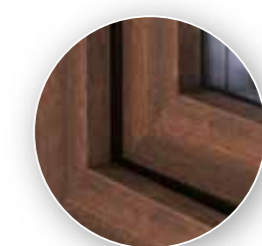
Classical white.

Timeless white of enduring beauty because the quality PVC-U of TROCAL is extremely weather resistant, retaining its smooth, glossy surface. It is also easy to clean.



Plain colour laminations.

This lamination brings colour into play. The surface is extremely weather resistant and easy to clean.



Wood grain laminations.

The wood grain lamination unites the natural look with the advantages of robust PVC-U. The regular paintwork usual for wooden profiles is no longer necessary, and your house receives an accentuated farmhouse style.

The most beautiful way to an individual image.



» TROCAL AluClip AD

» The system

TROCAL AluClip AD describes a unique window generation that is an intelligent combination of PVC-U and aluminium advantages. On the outside, butt welded aluminium covers offer an inexhaustible potential for colour design. On the inside, PVC-U profiles safeguard the optimal thermal insulation, high reliability, and low maintenance.

Colours.

TROCAL AluClip AD lets you realise your own colour ideas. We not only provide a range of standardised RAL colours in matt, high gloss, anodised, and NCS designs, we can also cater to an unlimited number of special colour needs.



Air supply – systematically.

» TROCAL AirMatic AD

» The system

The TROCAL ventilation system AirMatic AD is the perfect solution for obtaining a healthy indoor climate at all times, even when the windows are closed. Fresh air is guaranteed – even without active ventilation.

TROCAL AirMatic with self regulating air flow ensures that the passage of outdoor and indoor air is adequately metered for constant basic ventilation even when the windows are closed – free of draughts and without any losses of energy worth mentioning. Installed indoors in the top side of the window system, TROCAL AirMatic is virtually invisible and therefore presents a discreet solution on all sides. When the wind pressure rises outside, its flaps close automatically. The system is also suitable for retrofitting in previously installed TROCAL InnoNova_70.A5 windows.

TROCAL InnoNova_70.A5.



Open: air supply



Closed under wind action



Custom solutions.

»» TROCAL InnoNova_70.A5 – not only for visual highlights.

Looking good is not enough! Least of all for windows. Much more important is the right performance. This not only goes easy on your purse, but also provides for security and well being. And TROCAL InnoNova_70.A5 truly presents these values in visible form.



Saving energy.

The greatest loss of heat on the facade escapes through the window. That is why you are on the safe side with TROCAL InnoNova_70.A5.



Fresh air.

That too is not a problem – If you wish, various ventilation systems can be integrated in the window profile. AirMatic AD supports the supply of fresh air to living areas, even when the windows are closed.



Reliability.

Make it difficult for burglars – a range of equipment variants for TROCAL InnoNova_70.A5 help you to realise diverse safety classes just as you need them.



Sound insulation.

For peace and quiet – The profile geometry of TROCAL InnoNova_70.A5 can be fitted with special sound insulating glazing.





The development of modern window systems at TROCAL incorporates not only visually appealing systems engineering components, but also above all the greatest possible functionality. A convenient and wide range of ancillaries provides additional window functions for your personal needs:

All opening modes.

No matter the structural requirements or individual priorities, whether side hung or tilt/turn window or sliding, floating mullion, or fixed pane elements, all of the required opening modes are of course possible.

Ancillaries.

The comprehensive ancillary profile and ancillaries programme includes special installation solutions for simplified building processes, roller shutters for the optimal shade, and ventilation systems for specific applications. Also solutions for barrier free living can be realised with ease.

Large-area facade design.

Special structural solutions for large windows are no longer a problem thanks to modified mullions. The lean visible sight lines are retained, just as the wide range of surface designs.

Easy cleaning.

Thanks to the easy care profile material with its smooth surface and round, soft contours without sharp edges, the outer frame rebate – and therefore the whole window – can be cleaned easily on both the outside and the inside.

Barrier free living.

The glazed doors from TROCAL comply with the DIN 18025 requirements for barrier free building, including e.g. a threshold no higher than 20 mm.

See windows in a new light.

Welcome to the future.

»» With a clear conscience.

Sustainability means accepting economic, ecological, and social responsibility.

greenline



greenline represents the lead free stabilisation of PVC-U based on eco friendly calcium and zinc.



greenline represents the use of recycled material. This gives rise to a self contained material cycle of consistently high quality.



greenline represents high thermal insulation window systems that help to save heating costs and make a key contribution towards reducing CO₂ emissions.

Moreover, PVC-U windows are economical, low maintenance, and easy care and do not need painting. Owing to the antibacterial and antifungal properties of their materials, they are ideal for allergy sufferers and are therefore the preferred choice in clinics, hospitals, nurseries, and old people's homes.



Opt now for this modern generation of PVC-U windows and doors from the TROCAL brand profile systems, and choose in favour of greater sustainability.

profine GmbH

TROCAL Profilsysteme

53840 Troisdorf

Phone: +49 (0)2241 9953-0

Fax: +49 (0)2241 9953-3561

Internet: www.trocal-profile.de

E-Mail: info@trocal-profile.com



TROCAL[®]
That's my window.